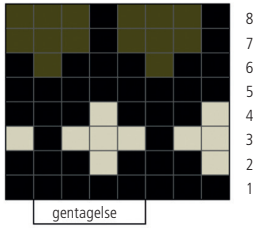


Diagram 1 – bul og ærmer

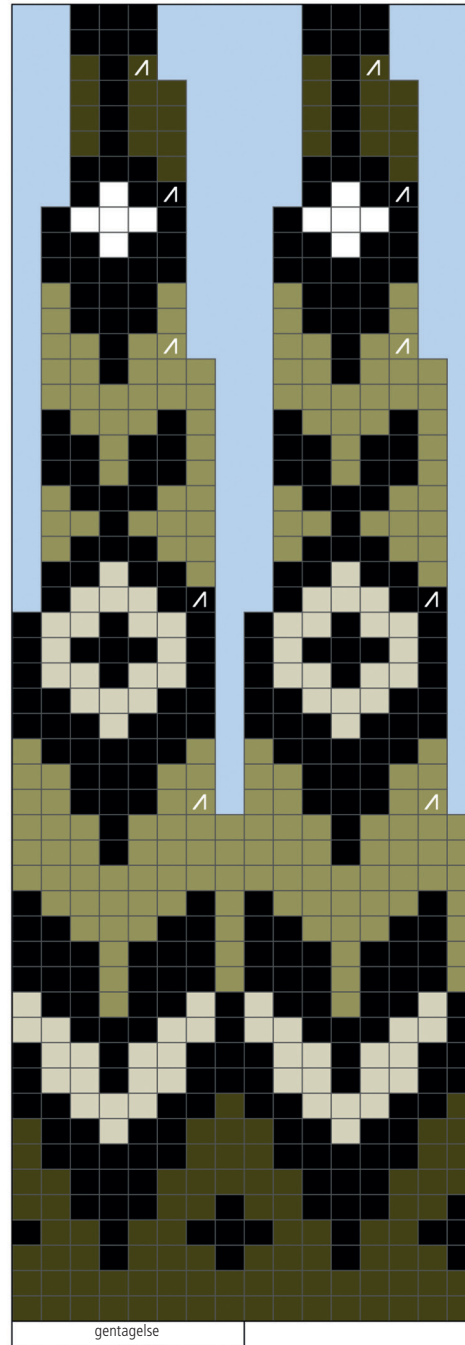


8  
7  
6  
5  
4  
3  
2  
1 rnd bul: 160 (168, 176, 184, 192, 200) m  
ærmer: 40 (40, 44, 44, 48, 48) m

Symboler

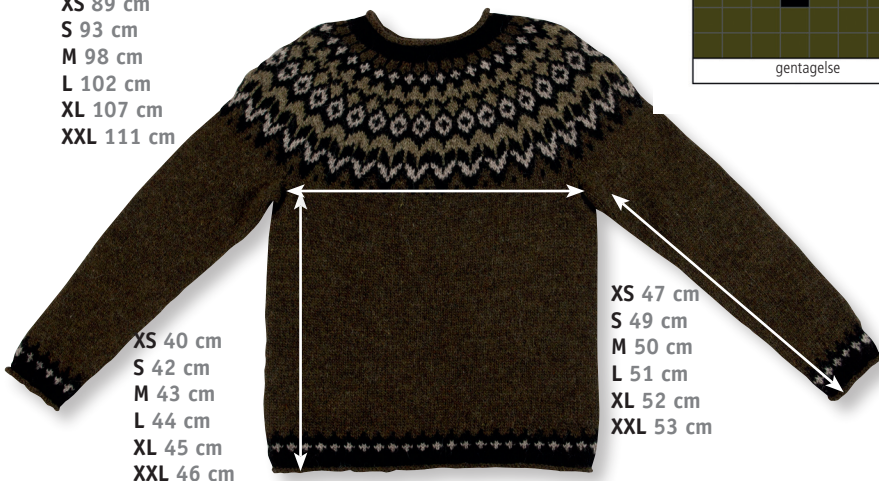
- A – 1416
- B – 0059
- C – 0086
- D – 1417
- 2 r sm
- ingen maske

Diagram 2 – bærestykke



52 spring over til str. XS  
51  
50 – 96 (99, 102, 105, 108, 111) m  
49  
48 spring over til str. XS (S, M, L)  
47  
46  
45 – 128 (132, 136, 140, 144, 148) m  
44  
43  
42  
41 spring over til str. XS (S, M)  
40  
39 – 160 (165, 170, 175, 180, 185) m  
38  
37 spring over til str. XS (S, M, L, XL)  
36  
35  
34  
33  
32  
31  
30  
29 – 192 (198, 204, 210, 216, 222) m  
28  
27  
26  
25  
24  
23  
22 spring over til str. XS (S, M)  
21 – 224 (231, 238, 245, 252, 259) m  
20  
19  
18 spring over til str. XS (S, M, L, XL)  
17  
16  
15  
14  
13  
12  
11  
10  
9  
8  
7  
6  
5  
4  
3  
2 spring over til str. XS (S)  
1 rnd 256 (264, 272, 280, 288, 296) m

XS 89 cm  
S 93 cm  
M 98 cm  
L 102 cm  
XL 107 cm  
XXL 111 cm



XS 40 cm  
S 42 cm  
M 43 cm  
L 44 cm  
XL 45 cm  
XXL 46 cm

XS 47 cm  
S 49 cm  
M 50 cm  
L 51 cm  
XL 52 cm  
XXL 53 cm